

# IRRIGATION PLAN

SCALE: 1/8" = 1'-0"

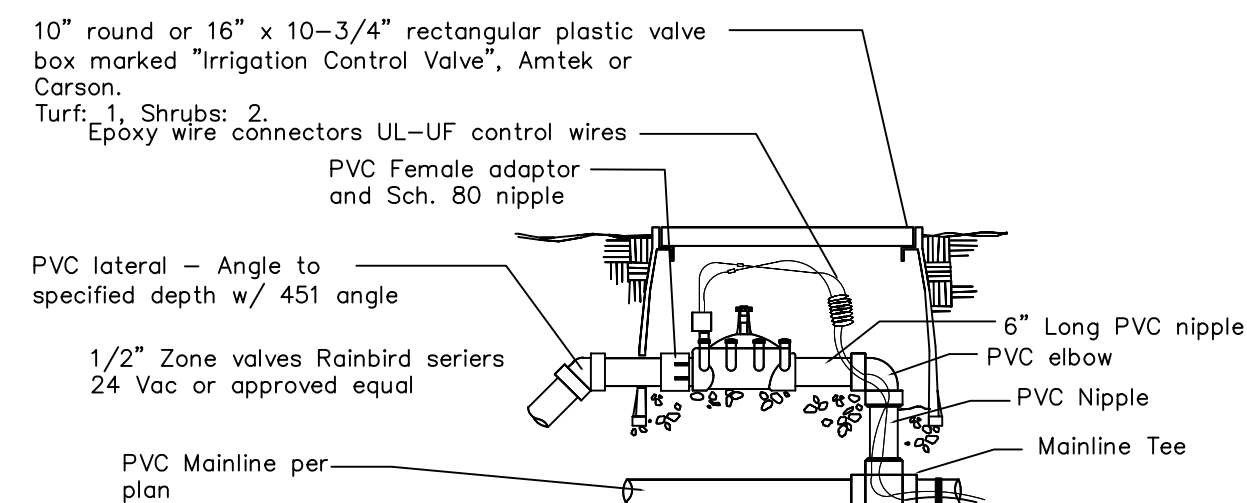


## IRRIGATION NOTES:

Piping:  
Main Lines: PVC SDR 26, Class 160 Solvent Weld.  
Zone Lines: PVC, 1/2 in. and 3/4 in. are not used. Min. pipe is 1 in. 315 PS: 1 in. = SDR 21. 200 PS: 1-1/4 in. and greater = SDR 26, 160 PS. All solvent weld.  
All end of the line unmarked pipe = 1 in. (min.).  
Sleeves and suction Line: PVC, SCH 40.  
Fittings: SCH 40 PVC  
Fabrication: To manufacturers specifications. Use blue or grey PVC cement, square cut, clean and prime all joints.  
Allow all main lines to cure for 24 hours before pressuring.  
All pipe, fittings, and solvents to conform to latest ASTM specs.  
Depth of Lines: Main Line and wiring = 18 in. depth, min.  
Sleeving under pavement = 24 in. depth, min.  
Suction Line = 24 in. depth, nominal.  
Zone Lines 1-1/2 in. and smaller = 10 in. depth, min.  
Control Wires: AWG 14 for all hot wires and AWG 12 for common.  
Solid copper type UF UL listed for direct burial.  
Run wires under main and tape every 20 feet.  
Run spares, two min.  
Splice wires only in a valve box. All splices shall be moisture proof using Snap tie or DBT UL connectors.  
Common shall be white, hot shall be red or color coded.  
Spare shall be black. Run in conduit where no Main line runs.  
Backfill all trenches free of debris, compact to original density, flush all lines, use screens in all heads, adjust heads for proper coverage avoiding excess water on walls, walks, etc.  
All details are graphically shown only. All quantities shall be verified by the contractor prior to installation. It shall be the contractors responsibility to assure complete overlapping coverage. Any discrepancies shall be reported to the owner and landscape architect before proceeding. Codes and local regulations shall take precedence over these plans, it is the contractors responsibility to comply. The landscape architect reserves the right to make minor field changes, the contractor may field adjust spray nozzle selection to provide for proper 100% min. coverage.  
Provide owner with an accurate as installed plan(s) at completion showing main lines, wiring, valves, crossings, etc. using dimensions from fixed datum.  
Contractor shall verify all underground utilities prior to commencement of work.  
The perimeter irrigation and landscape may be required to be installed prior to either or both pump stations and all main line / valve wiring. A separate plan showing modifications and alternate water source will be provided prior to construction. The modifications will not impact upon the design intent or substantially affect the construction plan.

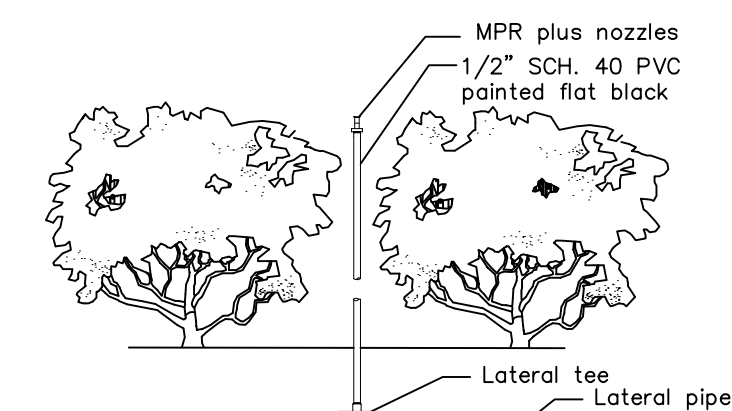
## IRRIGATION LEGEND:

MAIN LINE - 1-1/4" Feed From City Water Source  
LATERAL ZONE LINES - SDR PVC as noted  
ZONE BOUNDARIES  
BACK FLOW: See Point of Connection Detail.  
CONTROLLER - Toro Custom Command Series Electric 4 station controller #CC-P-4 mounted on perimeter wall in courtyard, with a Rain Check automatic rain sensor shutoff switch mounted outside on wall.  
ZONE VALVES - Toro 252 Series.  
EXISTING WATER METER - 1" or per City Code.  
SLEEVES - Sch. 40, 2 Sizes Larger.  
NOTE - Pipe Size Shown is the Lateral Size, NOT the Sleeve Size  
6" PDP-UP SPRAY - Toro 570 Series MPR Spray Nozzles as Required.  
NOTE - All of the below may not be used  
15' Series - 15-Q-PC - 1/4" 15-T-PC - 1/3" 15-H-PC - 1/2" 15-TT-PC - 2/3" 15-TQ-PC - 3/4" 15-F-PC - Full  
12' Series - 12-Q-PC - 1/4" 12-T-PC - 1/3" 12-H-PC - 1/2" 12-TT-PC - 2/3" 12-TQ-PC - 3/4" 12-F-PC - Full  
10' Series - 10-Q-PC - 1/4" 10-T-PC - 1/3" 10-H-PC - 1/2" 10-TT-PC - 2/3" 10-TQ-PC - 3/4" 10-F-PC - Full  
8' Series - 8-Q-PC - 1/4" 8-T-PC - 1/3" 8-H-PC - 1/2" 8-TT-PC - 2/3" 8-TQ-PC - 3/4" 8-F-PC - Full  
4S-SST-PC 4 x 18'  
4-EST-PC 4 x 15'  
4-CST-PC 4 x 30'  
6" PDP-UP FLOOD BUBBLER - Toro 570 Series MPR Pressure Compensating Nozzles as Required.  
SYSTEM DESIGN OPERATING PRESSURE = Between 35 and 40 psi.  
4" PDP-UP ROTOR - Hunter PGM Rotor w/ Appropriate Nozzle as Required



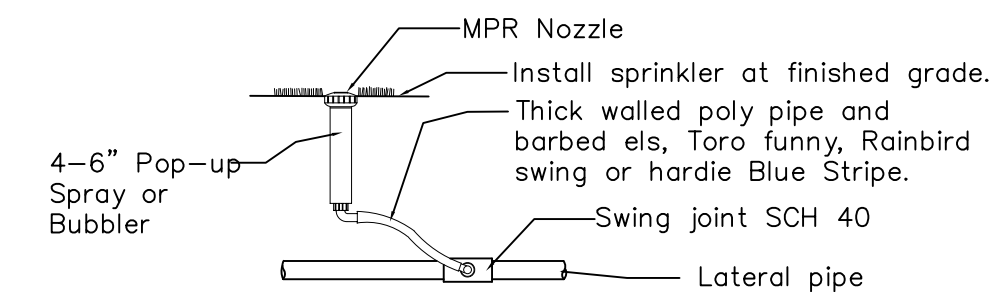
Zone Valve Detail

NTS



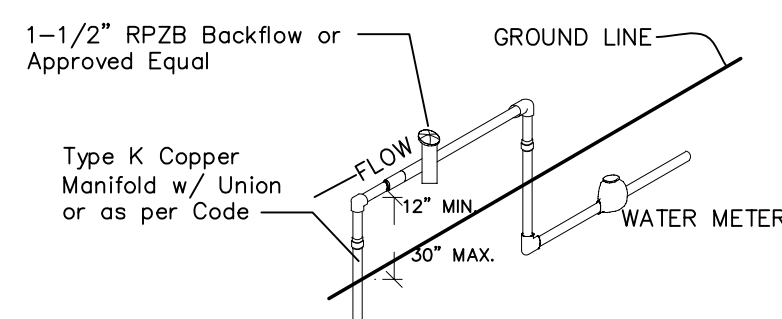
Shrub Riser Spray Detail

NTS



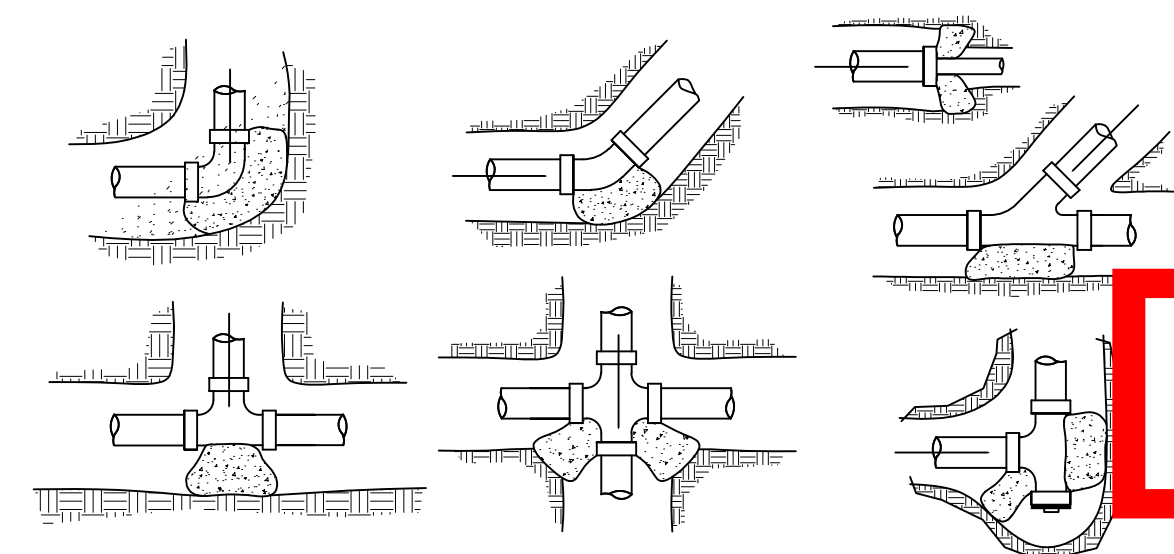
4 or 6" Pop-up Spray / Bubbler Detail

NTS



Point of Connection

NTS



Main Line Thrust Blocks

NTS

DRWG. TITLE : IRRIGATION PLAN

PROJECT : TOWNHOMES

NW 19th AVENUE

POMPANO BEACH, FLORIDA

CLIENT : DEEP ROOTS

Wayne K Tonning

Digitally signed by Wayne K Tonning  
Date: 2023.09.29 10:10:54 -04'00'

PROJECT NO. 23-145

DRAWN BY WKT

DESIGNED BY WKT

CHECKED BY WKT

DATE : 09-18-23

DWG. NO. LI-1

SHT. NO. 1 of 1

REVISION :

PZ23-12000026  
11/15/2023



Landscape Architecture & Land Planning  
Landscape Architect - Florida License #6666709  
4855 NW 92 Terrace  
Coral Springs, Florida 33067  
Tel: 561-414-8269 Email: wtonning@tonningandassociates.com